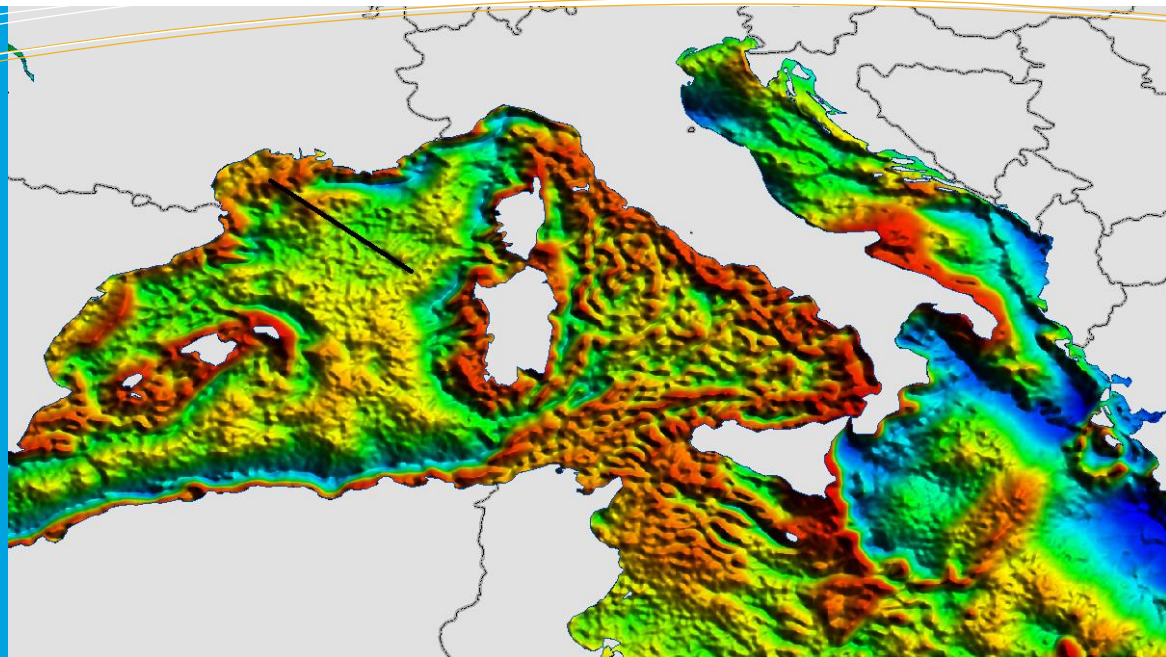


GEOLOGICAL FRAMEWORK AND IMPLICATION FOR THE HC PROSPECTIVITY IN THE WESTERN MEDITERRANEAN SEA



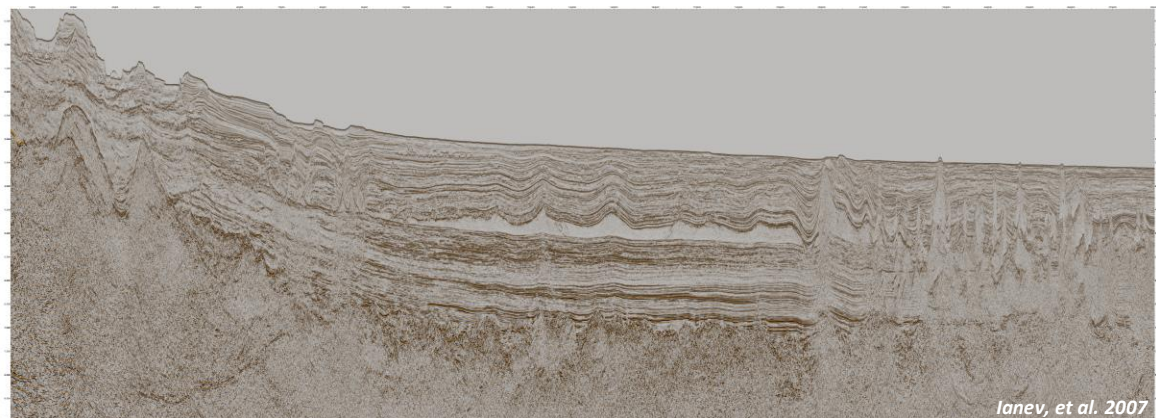
Successful hydrocarbon exploration has occurred in the Western Mediterranean since the 1960s. Advances in drilling and imaging techniques have increased recent interest in the area; however the regional understanding of the structural and tectonic controls on stratigraphy and hydrocarbon occurrence can still be greatly improved.

Examining the regional context of a series of genetically related sedimentary basins frequently reveals new insights into the hydrocarbon prospectivity of each of the basins. With this new Regional Report, Getech and GEPlan will utilise their key data and expertise to provide this regional context.

Our joint Regional Report will build a structural, tectonic and stratigraphic framework for the area, providing the context within which to build a comprehensive understanding of the hydrocarbon prospectivity of the region.

The Regional Report merges:

- GEPlan's seismic and well dataset and understanding of the tectonostratigraphic evolution and petroleum systems of the basins in the area.
- Getech's expertise in interpretation of its extensive gravity and magnetic data to underpin the tectonic and geodynamic evolution of the region.



For more information, contact:
Angelo Ricciato
angelo.ricciato@geplan.it

GEPLAN CONSULTING

Via L. Ariosto, 58 - 44121 Ferrara – ITALY
Ph: +39 0532 207770
Fax: +39 0532 1920204
e-mail: info@geplan.it
website: www.geplan.it

GEPlan Consulting s.r.l. is an oil and gas consulting firm that can provide innovative and integrated services for exploration, appraisal and development projects. It has specialistic skills in the characterization of carbonate and fractured reservoirs and Italian and Circum-Mediterranean Oil and Gas Prospectivity. This Regional Report provides an overview of the regional tectono-stratigraphic framework and petroleum prospectivity potentials of Central and Western Mediterranean domain, and is based on GEPlan previous multiclient studies on the following areas: Adriatic basin, Sicily and Malta Channels basin, Southern Italy, Provencal basin, Albania and Western Greece and the Valencia Trough. These reports describe the geological characteristics of the basin and its evolution through time and they cover the most important aspects related to the hydrocarbon exploration and prospectivity, identifying and characterising the proved and possible plays in the area.

GEOLOGICAL FRAMEWORK AND IMPLICATION FOR THE HC PROSPECTIVITY IN THE WESTERN MEDITERRANEAN SEA

This Regional Report will:

- Investigate the structural geometry and crustal types of the region and the resultant accommodation space
- Evaluate the plate models proposed for the region
- Describe the different basins in terms of crustal, sedimentary and structural characteristics
- Provide detailed regional chronostratigraphic correlations
- Assess hydrocarbon discovery distribution relative to geological and structural settings

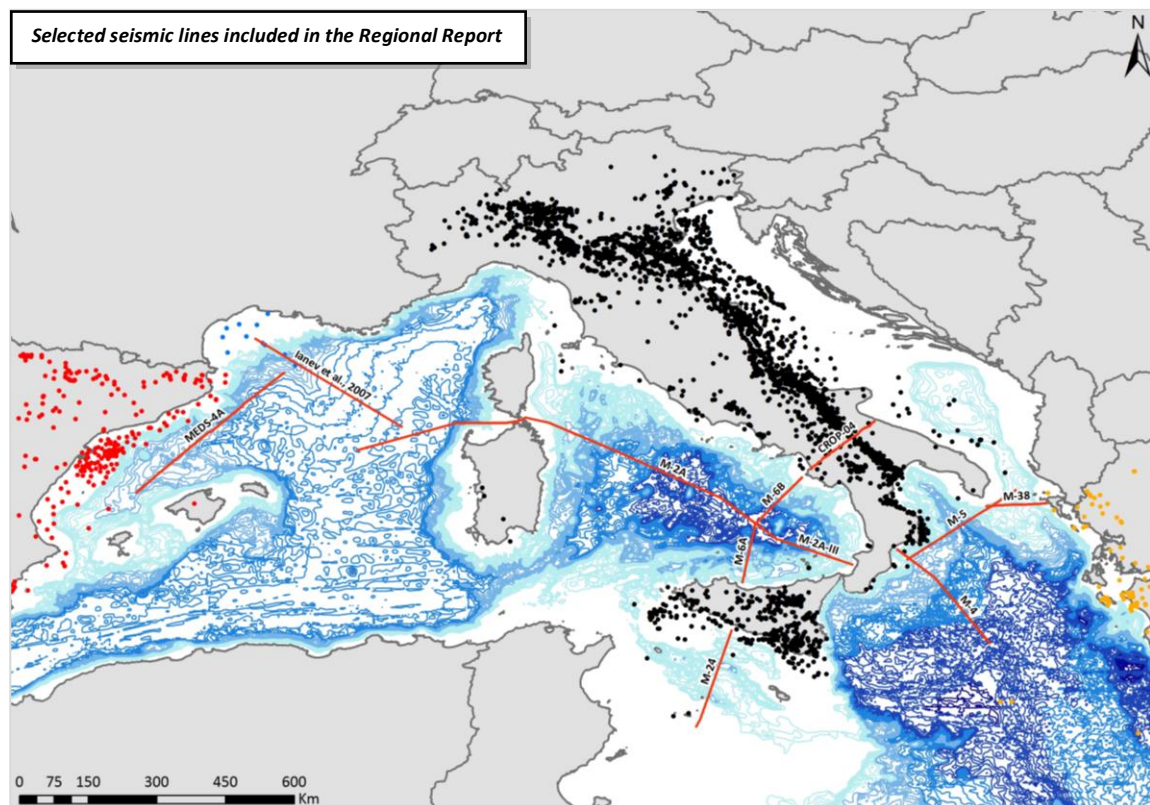
The Report will include:

- Images of gravity and magnetic data
- Structural framework and crustal architecture
 - 1:1 million scale structural framework with linked activation history table
- Up to five 2D gravity and magnetic profiles
- Regional seismic cross sections that cover the entire area
- Depth-to-basement, depth-to-Moho, sediment and crustal thickness, and beta factor grids
- Reviewed, published plate models that have been validated against our refined crustal architecture
- A chronostratigraphic review in light of new regional insights from the structural framework, crustal architecture mapping and plate modelling

Products are delivered digitally as:

- Technical reports with extensive figures and tables
- A series of posters that summarise the main data and interpretations
- Seismic data (SEGY format) available on request
- Esri ArcGIS™ MXD projects and geodatabases v10.x (earlier versions available on request)

Selected seismic lines included in the Regional Report



For more information, contact:
Angelo Ricciato
angelo.ricciato@geplan.it

GEPLAN CONSULTING

Via L. Ariosto, 58 - 44121 Ferrara – ITALY
Ph: +39 0532 207770
Fax: +39 0532 1920204
e-mail: info@geplan.it
website: www.geplan.it